

Summary

On 31 December 2016:

- on a **seasonally adjusted**¹ basis, the total number of people registered as actively seeking work (ASW) was²:
 - 10 lower than the previous month
 - 110 lower than the average for the preceding three months
 - 110 lower than a year earlier
- the **non-seasonally adjusted** ASW total was 1,280; this total is 30 lower than in the previous month, 110 lower than a year earlier and the lowest recorded in the last 6 years (since December 2010)
- the total number of **long-term ASW** (registered for more than twelve months) was 270; this total is 10 higher than the previous month and 70 higher than a year earlier
- there were 370 individuals registered as ASW but engaged in some form of paid employment and classified as **underemployed**; this includes 110 individuals also classified as long-term ASW

Introduction

The Social Security Department compiles data on people registered as actively seeking work (ASW) in Jersey. The Statistics Unit independently analyses this anonymised data and publishes a monthly report.

It is important to note that unemployed Jersey residents are not required to register as ASW. There are however certain requirements for those in receipt of an income support claim. Changes to the income support criteria, as well as administrative decisions within Social Security, can have an impact on the total numbers registered as ASW (see [Appendix A](#) for more details). On a more historical basis, the introduction of Income Support in 2008 led to the inclusion of a greater number of individuals in the registered figures.

The numbers shown therefore constitute an informative set of indicators demonstrating the level of individuals registered as actively seeking work in the Island at a given point in time.

The internationally comparable unemployment rate is defined by the International Labour Organisation (ILO). This includes both the registered unemployed and those not registered but still seeking work.

The ILO unemployment rate for Jersey is measured by the Annual Social Survey, the Household Spending and Income Survey and the Census. In recent years, the ILO unemployment rate for Jersey has been:

- 4.7% in March 2011, measured by the 2011 Jersey Census, corresponding to 2,570 people being unemployed and looking for work in March 2011
- 5.7% in June 2013, measured by the 2013 Jersey Annual Social Survey, corresponding to 3,200 people being unemployed and looking for work in June 2013
- 4% in the period of April 2014 to May 2015, measured by the 2014/2015 Household Spending and Income Survey, corresponding to 2,500 people being unemployed and looking for work

¹ Seasonal adjustment is a statistical technique, which enables examination of the underlying behaviour in a series of data by removing variations associated with the time of year, e.g. Christmas, Easter, academic year. See [Notes](#) for more details.

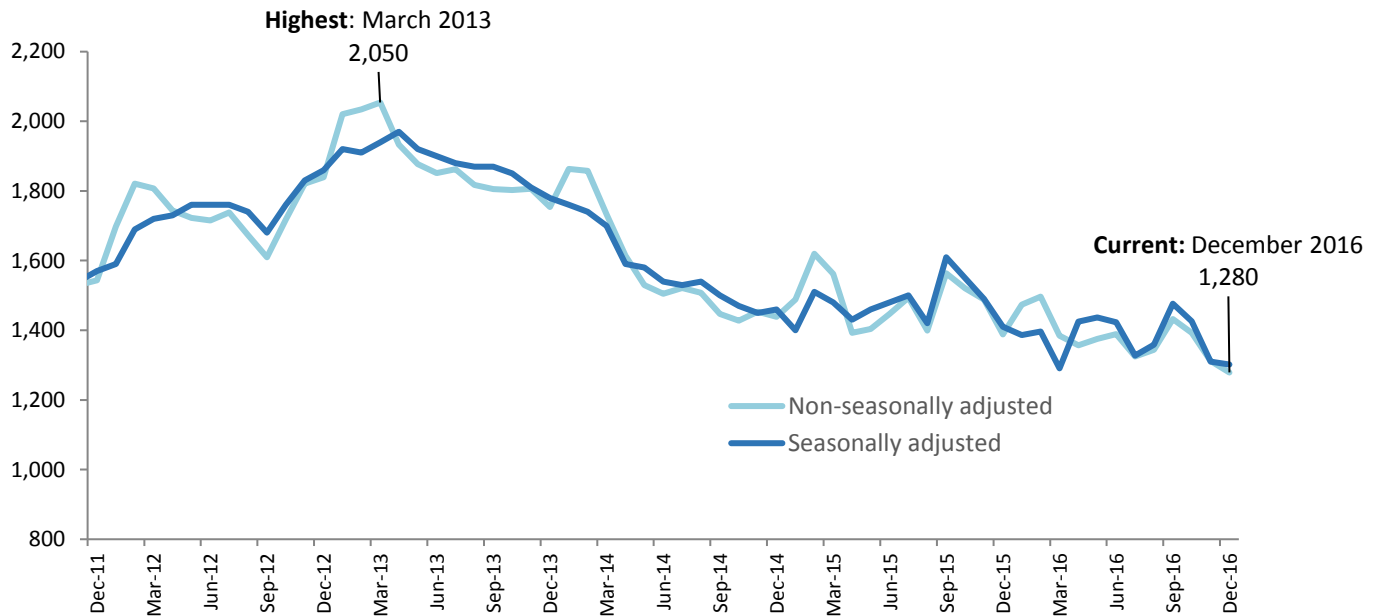
² ASW numbers presented in this report are rounded independently to the nearest 10.

Registered Actively Seeking Work

On 31 December 2016, 1,280 people were registered with the Social Security Department as actively seeking work (ASW). Over four-fifths (81%) of individuals registered as ASW on this date (corresponding to 1,040 people) were receiving Income Support³.

Figure 1 shows the total number of people registered as ASW at the end of each month since December 2011 (a table of the monthly data is shown in [Appendix B](#)). The total number registered in December 2016 was 30 lower than in the previous month, 110 lower than twelve months earlier (December 2015) and the lowest recorded in the last 6 years (since December 2010).

Figure 1 – Total number of individuals registered as ASW, December 2011 – December 2016



The seasonally adjusted series of the total registered as ASW, in which seasonal and calendar effects are removed, is also shown on Figure 1. From this perspective, the total number of people registered as ASW in December 2016 was:

- 10 lower than the previous month, November 2016
- 110 lower than the mean for the preceding three-month period, September 2016 to November 2016
- 110 lower than a year earlier, December 2015

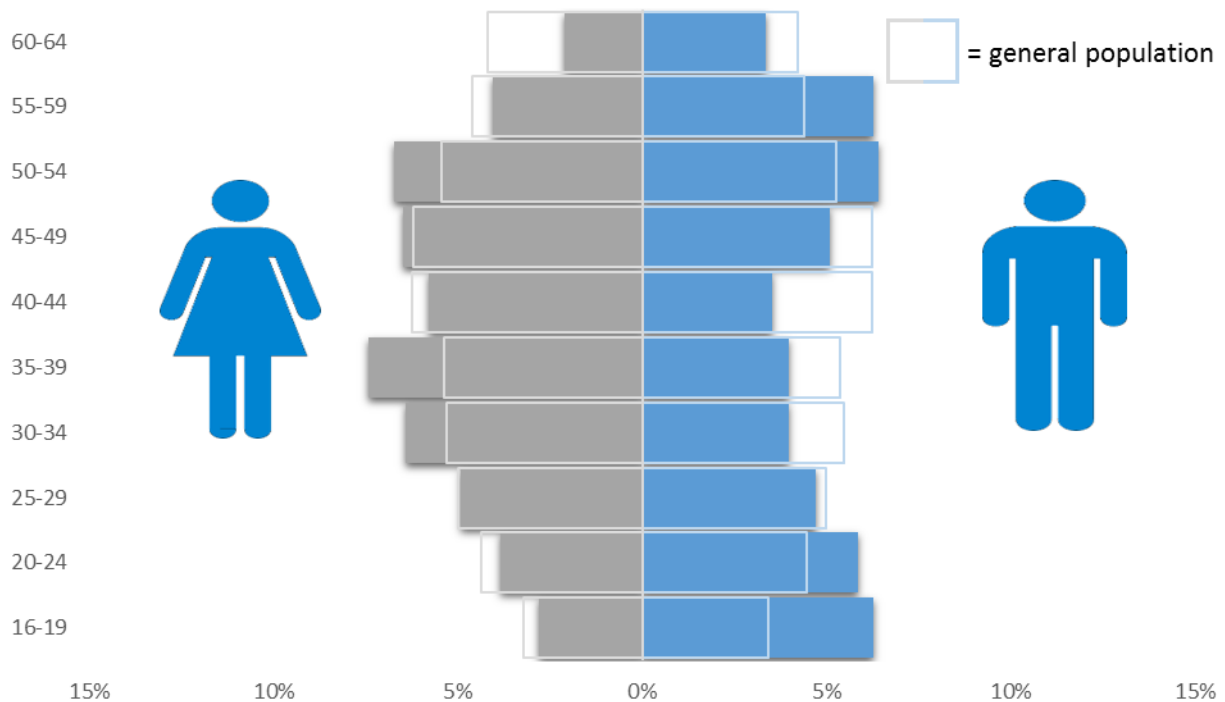
In respect of both the seasonally adjusted and non-seasonally adjusted ASW totals, it should be noted, when making comparisons over time, that changes to the income support criteria, as well as certain administrative changes within Social Security, can result in changes in the total number of people being considered as ASW in a particular month.

³ The total number of adults receiving Income Support and not working will be greater than this figure, which represents the number of people receiving Income Support who were registered as ASW on 31 December 2016.

Registered ASW by age and gender

On 31 December 2016, more people registered as ASW were female (650 individuals), than male (630 individuals).

Figure 2 – Age and gender distribution of individuals registered as ASW compared with the proportions in the general population⁴, December 2016

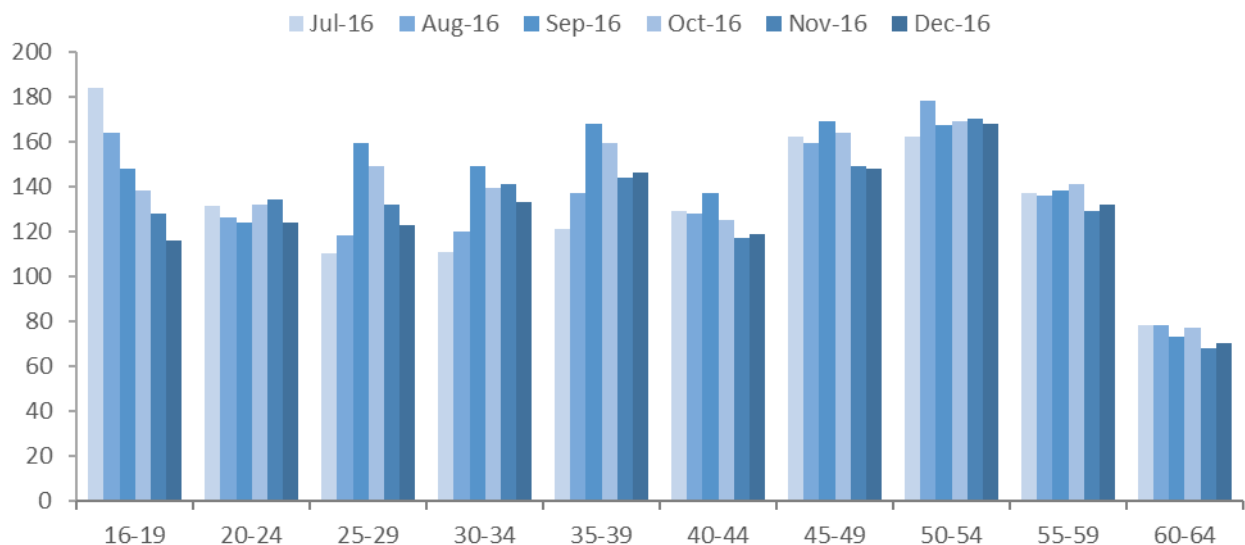


In respect of the breakdown of gender by age group:

- there were more males registered as ASW than females in both the youngest (16-24) and the oldest (55-64) age groups
- there were more females than males registered in all age groups ranging from ages 25 to 54
- the 16-19 age group had the largest proportional gender difference, where the number of males registered as ASW (80 individuals) was double the number of females (40 individuals)

Figure 3 shows the numbers registered as ASW by age of individuals in each of the last six months, from July 2016 to December 2016.

Figure 3 – Individuals registered as ASW by age, July 2016 – December 2016



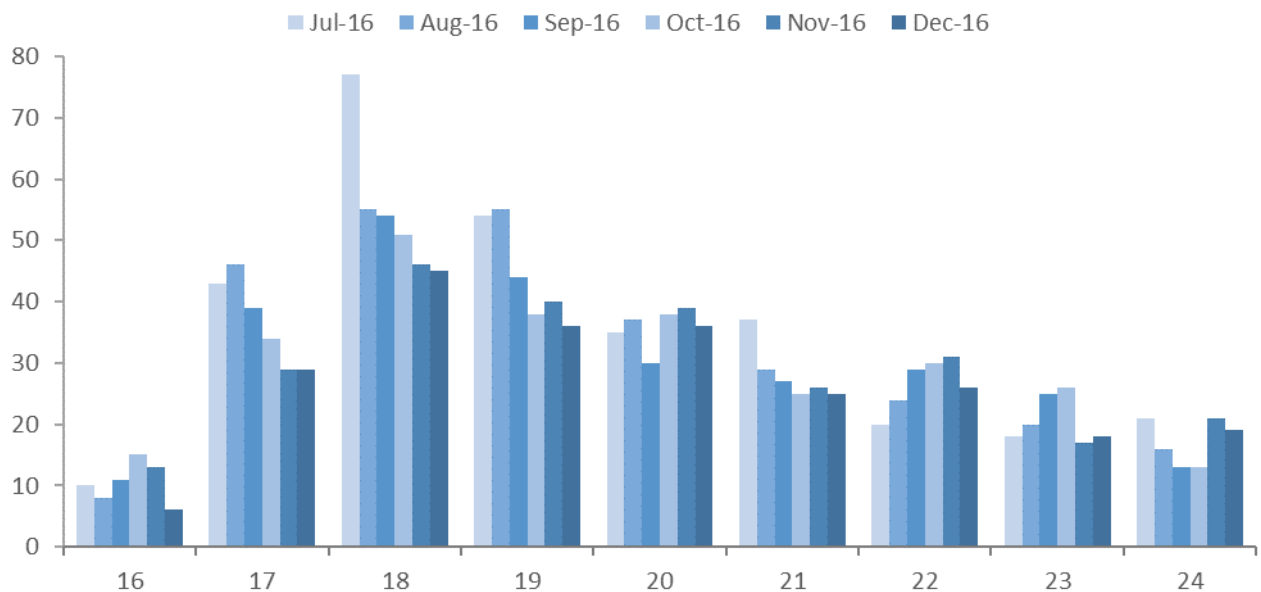
⁴ At the 2011 Jersey census

On 31 December 2016, a fifth (19%) of people registered as ASW were under 25 years of age (240 individuals); around one in ten (9%) of the total were teenagers, aged 16-19 years (120 individuals).

In the latest month, the 16-19, 20-24, 25-29 and 30-34 age groups each recorded decreases of around 10 individuals registered as ASW compared to the previous month. All other age groups recorded small changes (less than 10) in the number registered as ASW.

Figure 4 shows the age distribution for people below 25 years of age who were registered as ASW in the latest six months, from July 2016 to December 2016. Of those people registered as ASW at the end of December 2016, 60 were on the Advance to Work scheme.

Figure 4 – Individuals under the age of 25 registered as ASW, July 2016 – December 2016

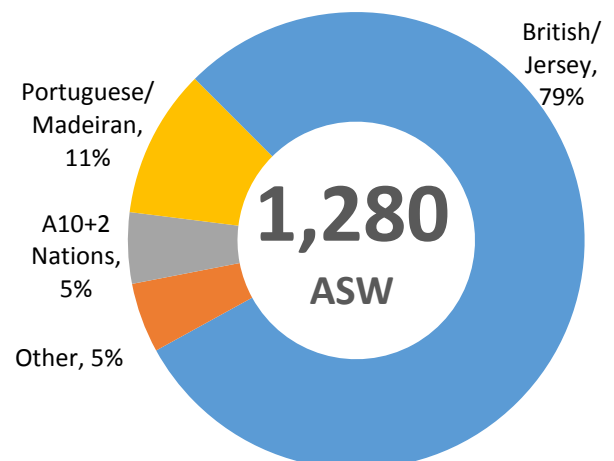


Registered ASW by nationality

On 31 December 2016:

- around four-fifths (79%) of people registered as ASW were of British / Jersey nationality⁵; a decrease of 20 individuals compared with the previous month
- there were 140 individuals of Portuguese / Madeiran nationality registered as ASW (11% of total), essentially unchanged compared with the previous month
- there were 70 individuals from the EU Accession (A10+A2)⁶ nations registered as ASW, essentially unchanged compared with the previous month

Figure 5 – Individuals registered as ASW by nationality, December 2016



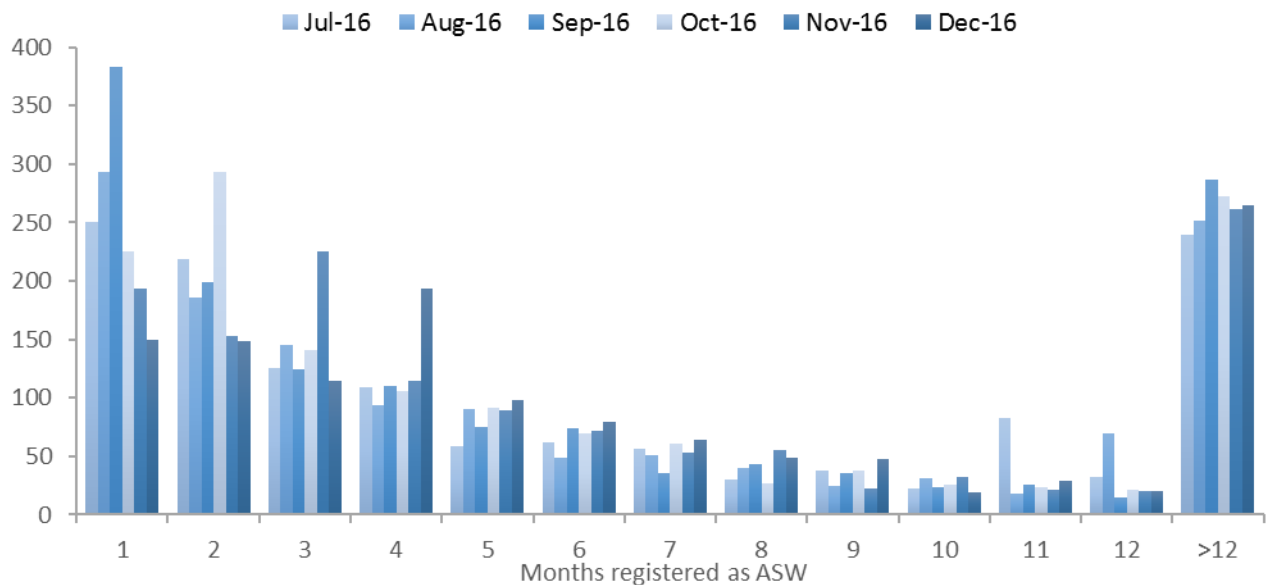
⁵ Nationality recorded by the Social Security Department, for the purpose of registering as ASW, is self-reported.

⁶ The twelve countries which joined (“gained accession to”) the European Union in May 2004 (Cyprus, the Czech Republic, Estonia, Hungary, Latvia, Lithuania, Malta, Poland, Slovakia and Slovenia) and February 2007 (Bulgaria and Romania).

Registered ASW duration

Over two-fifths (32%) of all people registered as ASW on 31 December 2016 had been registered for three months or less - see Figure 6.

Figure 6 – Registered ASW by length of period registered (months), July 2016 – December 2016

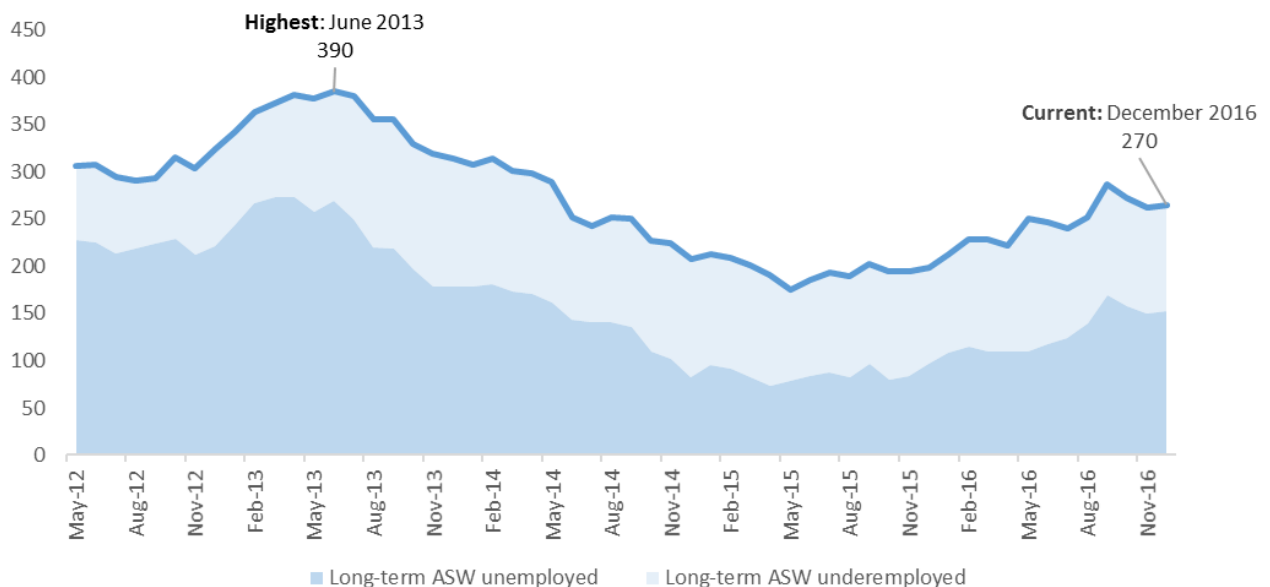


The number of new registrations in December 2016 (150 people) was 40 lower than that recorded in the previous month (November 2016) and 20 lower than a year earlier (December 2015).

Long-term Registered ASW

On 31 December 2016, there were 270 people who had been registered as ASW for more than twelve months, accounting for around one in five (21%) of the total ASW. The latest number of long-term ASW was 10 higher than the previous month (November 2016) and 70 higher than twelve months earlier (December 2015).

Figure 7 – Long-term ASW underemployed and long-term ASW unemployed, May 2012 – December 2016

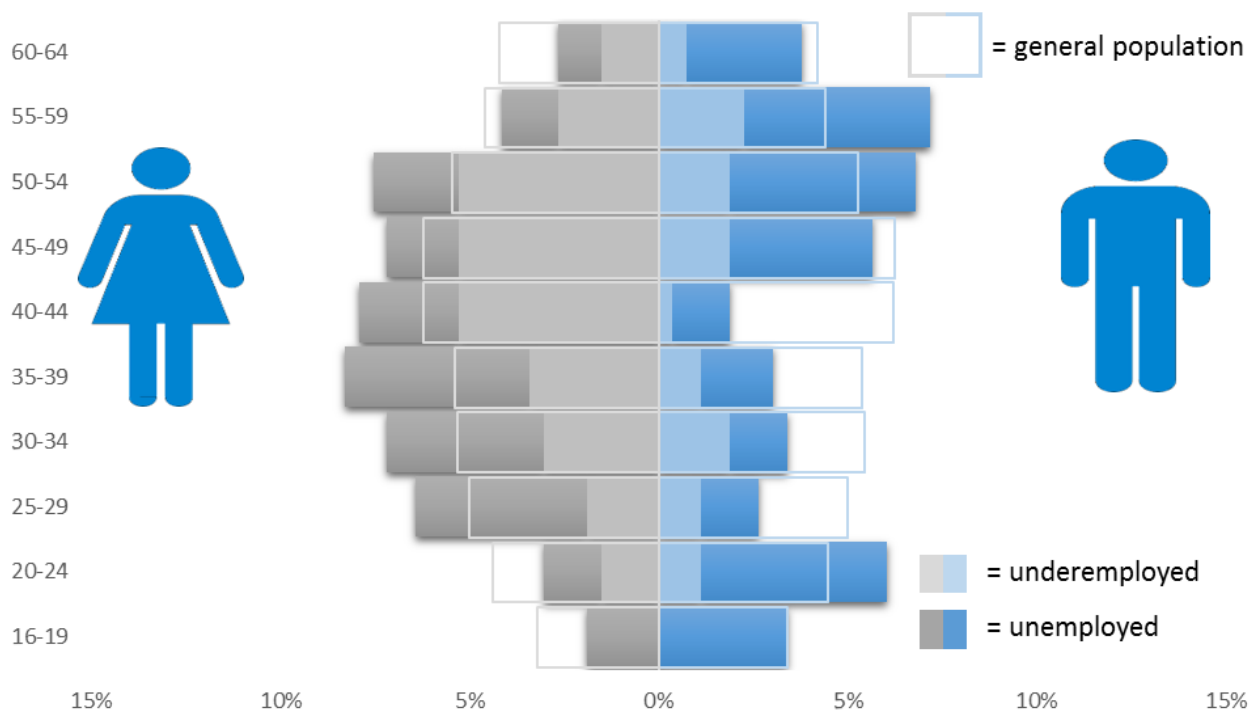


Of the 270 individuals who were registered as ASW for more than twelve months, 110 were engaged in some form of paid employment but were classified as underemployed⁷. Almost three-quarters (73%) of those registered as long-term ASW but engaged in some form of paid employment were female.

⁷ See [ASW registered underemployment](#) – page 7 of this report

Figure 8 shows the age and gender distribution of the long-term ASW in December 2016.

Figure 8 – Age and gender distribution of individuals registered as long-term ASW underemployed and unemployed compared with the proportions in the general population⁸, December 2016



Over half (56%) of those registered as ASW for more than twelve months were female, and the number of females registered as long-term ASW were greater than males in all but the youngest (16-24) and oldest (55-64) age groups.

Industry

Individuals working in some industries of the economy, notably in the Finance sector, often seek employment through private agencies and do not register with the Social Security Department. Such industries will therefore tend to be under-represented in the ASW numbers.

The last industry of employment was recorded for around nine out of ten people registered as ASW. On 31 December 2016:

- almost a fifth (19%) were previously employed in ‘Retail and Wholesale, Motor repairs and sales’
- almost a fifth (19%) were previously employed in ‘Miscellaneous professional & domestic services’
- a sixth (17%) were previously employed in ‘Banking, Miscellaneous Insurance, Finance and Business’

⁸ As recorded by the 2011 Jersey Census.

Registered ASW underemployment

Individuals who are working fewer hours than they would like or who would like to change their current working situation are classified as underemployed. The International Labour Organisation (ILO) provides two definitions of underemployment⁹:

- *time-related underemployed*, which is due to insufficient hours of work
- *inadequate employment situations*, which are due to other limitations in the labour market, which limit the capacities and well-being of workers

In Jersey, individuals who are in receipt of Income Support are required to work at least 35 hours per week, unless exempt from full-time work. Those who do not meet this requirement must register as Actively Seeking Work. The total ASW figure therefore includes individuals who are working less than the 35 hours per week required under the terms of Income Support.

The number of ASW underemployed also includes:

- individuals who are on the Foundations programme and engaged in paid work of 32 hours per week (there were 40 such individuals in December 2016)
- certain self-employed individuals who are receiving income support and are still required to pursue additional employment (there were 50 such individuals in December 2016)

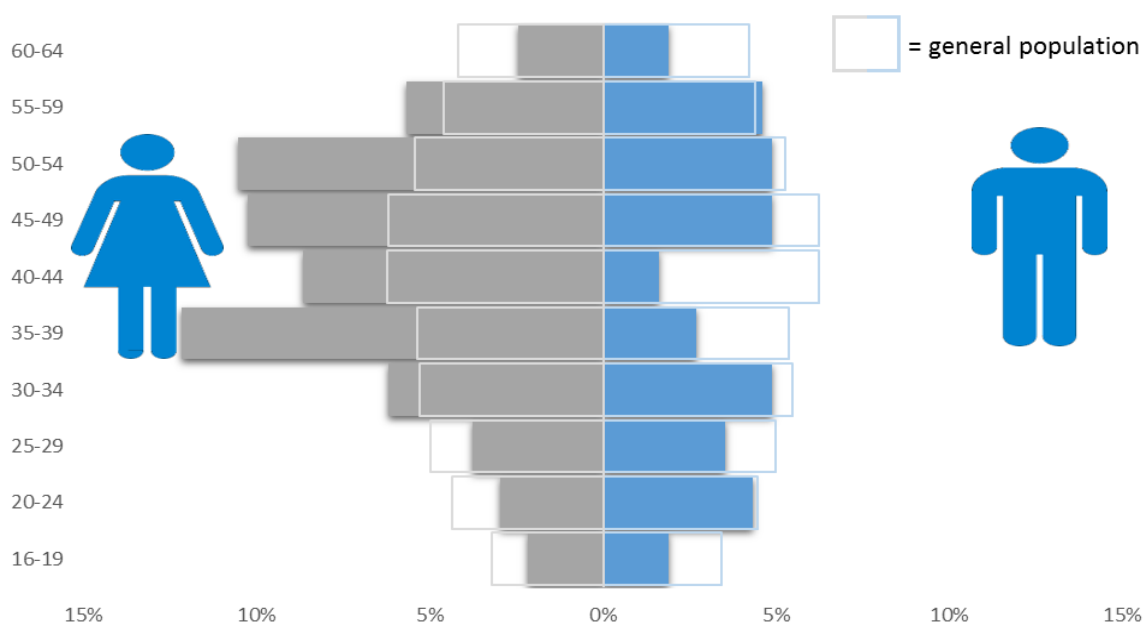
In December 2016, 29% of all people registered as ASW were underemployed; the numbers of such individuals in each of the last twelve months are shown in Table 1.

Table 1 – Number of ASW registered underemployed, December 2015 – December 2016

	Dec 15	Jan 16	Feb 16	Mar 16	Apr 16	May 16	Jun 16	Jul 16	Aug 16	Sep 16	Oct 16	Nov 16	Dec 16
Individuals	410	400	430	420	460	520	480	420	430	420	410	400	370
Percentage of total ASW	30%	27%	29%	30%	34%	38%	35%	32%	32%	29%	29%	31%	29%

Figure 9 shows the age and gender distribution of people registered as ASW underemployed; almost three-fifths (55%) were aged 40 years or over and almost two-thirds (65%) were female.

Figure 9 - Age and gender distribution of individuals registered ASW underemployed compared with the proportions in the general population¹⁰, December 2016



⁹ International Labour Organisation: *Resolution concerning the measurement of underemployment and inadequate employment situations*.

¹⁰ At the 2011 Jersey census

Notes

Context

The number of people registered as ASW includes people who are on the Advance to Work, Advance Plus and Work Right schemes. The ASW total will also include individuals who are working fewer than the 35 hours per week required under the terms of Income Support; such individuals will simultaneously be working and registered as actively seeking work.

When placing the figures contained in this report in a longer-term historical context it should be recognised that there have been significant changes in the criteria relating to registered ASW in Jersey in recent years. In particular, the introduction of Income Support in 2008 led to greater numbers of individuals who were actively seeking work being included in the registered figures.

People who are registered as actively seeking work receive the support of one of the government employment schemes, which come under the administration of Back to Work:

- Advance to Work – for jobseekers aged 16 - 24 years
- Advance Plus – for jobseekers aged 20 - 65 years with an industry-specific interest
- Work Right – for jobseekers with barriers to employment or who have been registered as ASW for 52 weeks or longer
- Work Zone – for registered jobseekers who are closer to employment
- Ready for Work – for newly registered jobseekers or jobseekers without a dedicated advisor

In addition to the above, some individuals registered as ASW will be assisted by the Jersey Employment Trust (JET), a registered charity whose role is to assist people with a disability to prepare, find and maintain employment. On 31 December 2016 there were 150 such individuals being assisted by JET.

As well as the development and expansion of the above schemes, Back to Work is responsible for:

- the Employment Incentive
- a dedicated Back To Work Recruitment Team
- industry and employer specific initiatives

The aim of Back to Work is to increase access to job opportunities for locally qualified people who are registered as actively seeking work by supporting jobseekers and building a partnership with employers to provide sustainable job opportunities.

Seasonal Adjustment

The Jersey employment market exhibits a number of seasonal effects that can affect the total number of people registered as actively seeking work. In order to enable meaningful month-on-month comparison, the actively seeking work totals are seasonally adjusted using the Eurostat Demetra software package.

Seasonal adjustment is based on ongoing estimation of seasonal trends and as such is subject to revision. In order to ensure a reasonably stable series of data for the user, the seasonal model is revised once a year, in January, at which point the entire historic series will potentially be revised. These revisions are welcome as they derive from an expanded set of data and lead to better estimates of the seasonal pattern. Throughout the calendar year the most recent model will be utilised and therefore the monthly figures will not be subject to revision.

All other figures presented in this report, are based on the non-seasonally adjusted measures, unless otherwise stated.

Statistics Unit
12 January 2017

Appendix A

Changes in ASW Recording / Income Support Criteria

Whilst there is no legal requirement for unemployed residents of Jersey to register as actively seeking work with the Social Security Department, there are certain requirements to register for those in receipt of income support payments. Changes to these requirements as well as certain administrative changes within Social Security can result in changes in the total number of people being considered as ASW. The most recent such changes are as follows:

Date of Change	Description	Approximate Impact
May 2016 to September 2016	The threshold for the cumulative Long Term Incapacity Allowance (LTIA) percentage rate was increased from 40% to 45%. Any individuals below this threshold, in receipt of an Income Support claim, are required to register as ASW. This change was implemented gradually over a period of 5 months as individuals that fell within this revised criteria were assessed and then subsequently registered as ASW.	+ 90 registered ASW
September 2015	<p>Change in the Income Support criterion relating to parents with young children of school or nursery age. Prior to 1 September 2015 parents on income support, who were responsible for a child, had no job seeking requirements until the child turned 5 years of age, and therefore were not required to be registered as Actively Seeking Work.</p> <p>From 1 September 2015 parents where the youngest child on their income support claim is turning 5 years of age in the current academic year are now classified as jobseekers and are required to seek 25 hours of work per week – this resulted in approximately 80 additional individuals registered as ASW.</p> <p>In addition, parents where the youngest child on their income support claim is turning 4 years of age in the current academic year are also now classified as jobseekers and are required to seek 15 hours of work per week – this resulted in approximately 140 additional individuals registered as ASW.</p>	<p>+ 220 registered ASW</p> <p>In addition, it is anticipated that this change of criteria will result in an additional seasonal impact on the reported ASW numbers at the beginning of each subsequent school year as all parents that fall into this revised criteria will be required to register as ASW on that date (while in the past this would be spread throughout the school year).</p>
May 2015	Change of classification for certain self-employed individuals who are seeking further employment. This administrative change involved the reclassification of 70 such individuals who are now recorded as ASW.	+ 70 registered ASW
February 2015	The threshold for the cumulative Long Term Incapacity Allowance (LTIA) percentage rate was increased from 35% to 40%. As any individuals below this threshold, in receipt of an Income Support claim, are required to register as ASW, the raising of the LTIA threshold resulted in an additional 90 individuals being registered as ASW at the end of February 2015 compared with the previous month.	+ 90 registered ASW
April 2014	April 2014 – Prior to this point, the end-of-month ASW figures published by the Statistics Unit were based on data compiled by the Social Security Department on (or around) the 15th of the following month. From the April 2014 report onwards the end-of-month figures published are based on data compiled on (or around) the 1st of the following month. Moving the data compilation date forward by two weeks introduced a small upward systematic shift (of approximately 20 individuals) in the number of people classified as ASW at each end-of-month.	+ 20 registered ASW

Appendix B

Number of individuals registered as ASW, January 2011 – December 2016¹¹

		Male	Female	Total	Seasonally adjusted total			Male	Female	Total	Seasonally adjusted total
2011	Jan	910	480	1,390	1,280	2014	Jan	1,090	770	1,860	1,760
	Feb	960	510	1,470	1,330		Feb	1,080	780	1,860	1,740
	Mar	850	460	1,310	1,270		Mar	980	760	1,730	1,700
	Apr	870	490	1,350	1,290		^(c) Apr	900	720	1,610	1,590
	May	820	520	1,340	1,370		May	840	700	1,530	1,580
	Jun	790	500	1,300	1,350		Jun	790	710	1,510	1,540
	Jul	800	550	1,350	1,380		Jul	780	740	1,520	1,530
	Aug	820	530	1,350	1,420		Aug	780	720	1,510	1,540
	Sep	850	520	1,370	1,440		Sep	750	700	1,450	1,500
	Oct	920	570	1,500	1,550		Oct	760	670	1,430	1,470
	Nov	960	580	1,530	1,540		Nov	780	680	1,450	1,450
	Dec	960	580	1,540	1,570		Dec	760	680	1,440	1,460
2012	Jan	1,050	650	1,700	1,590	2015	Jan	790	700	1,490	1,400
	Feb	1,130	690	1,820	1,690		^(c) Feb	870	760	1,620	1,510
	Mar	1,100	700	1,810	1,720		Mar	820	740	1,560	1,480
	Apr	1,060	680	1,740	1,730		Apr	710	680	1,390	1,430
	May	1,040	680	1,720	1,760		^(c) May	730	670	1,400	1,460
	Jun	1,020	700	1,720	1,760		Jun	730	720	1,450	1,480
	Jul	1,020	720	1,740	1,760		Jul	770	720	1,490	1,500
	Aug	1,020	650	1,670	1,740		Aug	710	690	1,400	1,420
	Sep	970	650	1,610	1,680		^(c) Sep	720	840	1,560	1,610
	Oct	1,020	700	1,720	1,760		Oct	720	800	1,520	1,550
	Nov	1,090	730	1,820	1,830		Nov	710	780	1,490	1,490
	Dec	1,100	740	1,840	1,860		Dec	670	720	1,390	1,410
2013	Jan	1,210	810	2,020	1,920	2016	Jan	730	740	1,470	1,390
	Feb	1,210	820	2,030	1,910		Feb	750	750	1,500	1,400
	Mar	1,230	820	2,050	1,940		Mar	690	700	1,380	1,290
	Apr	1,140	800	1,930	1,970		Apr	630	720	1,360	1,430
	May	1,080	800	1,880	1,920		May	620	750	1,380	1,440
	Jun	1,040	810	1,850	1,900		Jun	660	730	1,390	1,420
	Jul	1,030	840	1,860	1,880		^(c) Jul	630	690	1,330	1,330
	Aug	990	820	1,820	1,870		Aug	630	710	1,340	1,360
	Sept	1,000	800	1,810	1,870		Sep	670	760	1,430	1,480
	Oct	1,040	770	1,800	1,850		Oct	660	730	1,390	1,430
	Nov	1,060	750	1,810	1,810		Nov	640	670	1,310	1,310
	Dec	1,030	720	1,750	1,780		Dec	630	650	1,280	1,300

¹¹ Numbers are rounded independently to the nearest 10; hence, components may not sum to totals.

^(c) Change in ASW Recording / Income Support Criteria - see [Appendix A](#) for more details